

Features

Fire alarm control panel status annunciation:

- Personal computer based annunciator provides a convenient and intuitive maintenance/service interface to display system activity and query history logs
- Compatible with Simplex® 4100ES, 4100U, 4100 and 4010ES Series fire alarm control panels
- Computer can be used for other functions when access to the fire alarm control panel is not required (connection to fire alarm control panel is supervised; computer must be running with software active at all times)
- Agency listed systems are supplied with Windows® Vista® Business 32-bit operating system
- Software compatible with Windows Vista, Windows XP, and Windows 2000 32-bit operating systems
- Listed to UL Standard 864 and ULC Standard S527*

PC Annunciator installation options:

- **Server with Local Client** installs on computer connected directly to the host fire alarm panel
- **Remote Clients** connect to the server via LAN/WAN Ethernet connections; up to 8 can be simultaneously connected (Agency listing is not applicable for Remote Client operation)

General annunciator features:

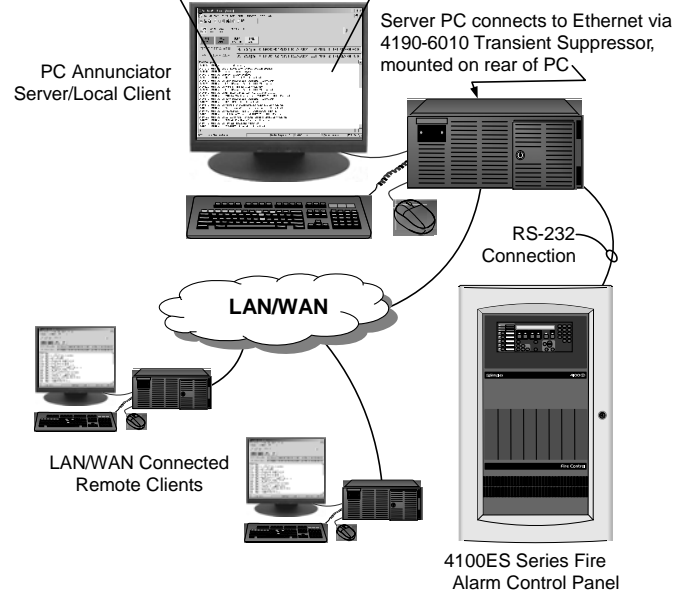
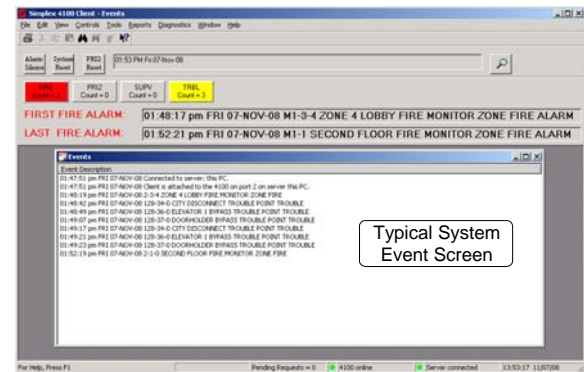
- Displays Alarm, Supervisory, Priority 2, and Trouble conditions with numerical tallies for each
- Displays first and last alarms; different event types have separate visible indicators with a common audible indicator
- Event logs can be searched and printed
- View and/or print TrueAlarm® status reports and service reports (printing requires an available local or network printer)
- Ports are available for local printer connections

Local Client system operations*:

- Connects to host panel's password protected login for protected features access; includes automatic logout with selectable logout timing
- Alarm Silence; System Reset; and Priority 2 Reset
- Global and individual point acknowledge
- Set system time and date; and clear event log
- Individual point access for control or point property revisions
- WALKTEST™ system test is supported for service convenience

Selectable packaging:

- Computer is available for desktop or rack mounting and includes keyboard and mouse
- High resolution LCD monitors: 19" diagonal for desktop; 19" diagonal with touchscreen for 19" rack, or 42" diagonal for horizontal wall mount applications
- Rack mount monitor with touchscreen allows cursor control similar to mouse; press and double press duplicates left mouse button click



PC Annunciator System Drawing
(4100ES shown for reference)

Description

4100ES/4100U/4100/4010ES Series Simplex fire alarm control panels process and store extensive system status, history, and individual point information for the connected devices. This information is accessible from the panel's information display. However, with the addition of a PC Annunciator connected to the host panel, the convenient and familiar Microsoft® Windows® operating system interface provides a more convenient and powerful access to this information for review, limited control, and report generation and printing.

* Refer to page 2 for additional listing details. ULC listed applications provide annunciation only, operator actions are not available. This product has been approved by the California State Fire Marshal (CSFM) pursuant to Section 13144.1 of the California Health and Safety Code. See CSFM Listing 7300-0026:195 for allowable values and/or conditions concerning material presented in this document. It is subject to re-examination, revision, and possible cancellation. Accepted for use - City of New York Department of Buildings - MEA35-93E. Additional listings may be applicable; contact your local Simplex product supplier for the latest status. Listings and approvals under Simplex Time Recorder Co. are the property of SimplexGrinnell LP, Westminster.

Connection Options

Local Client. A Local Client application is configured on the same computer as the Server and provides a password protected feature set (ULC listed systems provide annunciator only (restricted) features without operator actions). The computer is directly connected to the host control panel. (Note: A computer configured as a Server only without a Local Client is for connection only to Remote Clients. The Server application alone does not provide PC Annunciator features.)

Remote Client. 4190-5040 Remote Client applications provide standard annunciator operation (no control available).

Connection Options (Continued)

Connection Status Indications. Remote and Local Clients advise at their computer when connection to the Server is unavailable. Loss of communications to the Server is announced at the host panel.

Additional Reference

Description	Document
Applications Software 4190-5040	Installation 579-492 Operating 579-493
Quick Operation Reference, either software	579-880
LAN Connection Suppressor Installation Instr.	579-900

Product Selection (see below for additional listings requirements)

Category	Model	Description
System Type	4190-8201	PC Annunciator with hardware ; includes Windows Vista Business CD and license; select Applications Software, computer, and monitor below
	4190-8602	PC Annunciator software only (listings are not applicable with software only) ; computer hardware and operating system supplied separately; select Applications Software below;
Applications Software Select <u>One</u> per Local or Remote Client; includes dongle and dongle support software (Security Service) for <u>One</u> Client License (dongle is not required to operate Server function)	4190-5040	With 4190-8201, Pre-installed in Hardware ; provides PC Annunciator Server and a Local Client with <i>password protected</i> features (Annunciator with Control for Local Client); see additional listings reference below; ULC listed Local Client is Annunciator only With 4190-8602, Software Only (listings are not applicable with software only) ; can be installed as <u>one</u> of the following: 1. PC Annunciator Server only (no dongle required). 2. <u>or</u> PC Annunciator Server with Local Client providing <i>password protected</i> features (annunciator with control), requires dongle. 3. <u>or</u> Remote Client Annunciator (<i>restricted</i>) features, requires dongle.
Computer Type (select one)	4190-7011	Desktop
	4190-7012	Rack Mount
		Computer with Core 2 Duo 2.16 GHz CPU, 2) 160 GB Hard Drives, CD/DVD R/W, integral audio and amplified speakers, onboard video for up to two displays (1) SVGA and (1) DVI, 2 Serial ports, 1 Parallel port, 3 USB ports, 1 PS/2 port, dual Gigabit LAN, Passive backplane with (7) PCI, (2) ISA and (1) CPU slot, keyboard, and mouse; black/charcoal grey housing
Transient Suppressor for LAN/WAN Connection	4190-6010	Required for agency listing per Listings Requirements below; recommended for each PC Annunciator Remote Client LAN/WAN computer connection; mounts on rear of PC frame
LCD Color Monitor (select one)	4190-7130	19" (483 mm) diagonal for desktop applications; black housing
	4190-7232	19" (483 mm) diagonal for 19" wide rack mount, with touchscreen; black housing
	4190-7114	42" (1049 mm) diagonal for horizontal wall mount applications; black housing

Note: Equipment may vary due to computer design changes. Contact your local Simplex product supplier for exact equipment specifications.

Listings Requirements

System Type	Application Software	Listings*	Software Installation*	Equipment
4190-8201 with hardware	4190-5040	UL, ULC, CSFM, FM, & MEA	As listed above*	Computer and monitor selected from above; also requires 4190-6010 Suppressor for Server to LAN/WAN connection
4190-8602 software only	4190-5040	Not Applicable	Compatible office quality computer and monitor (refer to computer specifications reference on page 4); select computer and monitor appropriately listed for business/consumer use	

* **NOTE: For ULC Listed applications, the Local Client provides Annunciation Only, operator actions are not available (restricted features only).**

System Screen Details (event window is shown reduced, it can be maximized if desired)

Simplex 4100 Client - Events

File Edit View Controls Tools Reports Diagnostics Window Help

Alarm Silence System Reset PRI2 Reset 01:53 PM Fri 07-Nov-08

FIRE Count = 2 PRI2 Count = 0 SUPV Count = 0 TRBL Count = 3

FIRST FIRE ALARM: 01:48:17 pm FRI 07-NOV-08 M1-3-4 ZONE 4 LOBBY FIRE MONITOR ZONE FIRE ALARM

LAST FIRE ALARM: 01:52:21 pm FRI 07-NOV-08 M1-1 SECOND FLOOR FIRE MONITOR ZONE FIRE ALARM

Events

Event Description

- 01:47:51 pm FRI 07-NOV-08 Connected to server: this PC.
- 01:47:51 pm FRI 07-NOV-08 Client is attached to the 4100 on port 2 on server this PC.
- 01:48:19 pm FRI 07-NOV-08 2-3-4 ZONE 4 LOBBY FIRE MONITOR ZONE FIRE
- 01:48:42 pm FRI 07-NOV-08 128-34-0 CITY DISCONNECT TROUBLE POINT TROUBLE
- 01:48:49 pm FRI 07-NOV-08 128-36-0 ELEVATOR 1 BYPASS TROUBLE POINT TROUBLE
- 01:49:07 pm FRI 07-NOV-08 128-37-0 DOORHOLDER BYPASS TROUBLE POINT TROUBLE
- 01:49:17 pm FRI 07-NOV-08 128-34-0 CITY DISCONNECT TROUBLE POINT TROUBLE
- 01:49:21 pm FRI 07-NOV-08 128-36-0 ELEVATOR 1 BYPASS TROUBLE POINT TROUBLE
- 01:49:23 pm FRI 07-NOV-08 128-37-0 DOORHOLDER BYPASS TROUBLE POINT TROUBLE
- 01:52:19 pm FRI 07-NOV-08 2-1-0 SECOND FLOOR FIRE MONITOR ZONE FIRE

For Help, Press F1 Pending Requests = 0 4100 online Server connected 13:53:17 11/07/08

Event Screen Details

Simplex 4100 Client - FIRE ALARM

File Edit View Controls Tools Reports Diagnostics Window Help

Alarm Silence System Reset PRI2 Reset 01:51 PM Fri 07-Nov-08

FIRE Count = 1 PRI2 Count = 0 SUPV Count = 0 TRBL Count = 3

FIRST FIRE ALARM: 01:48:17 pm FRI 07-NOV-08 M1-3-4 ZONE 4 LOBBY FIRE MONITOR ZONE FIRE ALARM

FIRE ALARM

Time	Name	Label	Banner	Status
01:48:17 pm FRI 07-NOV-08	M1-3-4	ZONE 4 LOBBY	FIRE MONITOR ZONE	FIRE ALARM

TROUBLE

Time	Name	Label	Banner	Status
01:49:10 pm FRI 07-NOV-08	P34	CITY DISCONNECT	TROUBLE POINT	TROUBLE
01:49:11 pm FRI 07-NOV-08	P37	DOORHOLDER BYPASS	TROUBLE POINT	TROUBLE
01:49:11 pm FRI 07-NOV-08	P36	ELEVATOR 1 BYPASS	TROUBLE POINT	TROUBLE

For Help, Press F1 Pending Requests = 0 4100 online Server connected 13:51:35 11/07/08

Equipment Specifications

Computers and Accessories (Please note that equipment and specifications may vary due to equipment design changes)

Model	Description	Dimensions	Input AC Ratings
4190-7011*	Desktop Computer	16-7/8" W x 7" H x 17-5/8" D (429 mm x 178 mm x 448 mm)	95-132 VAC; 180-264 VAC, auto-range; 47 to 63 Hz; 2 A @ 120 VAC (240 VA)
4190-7012*	Rack Mount Computer	19" W x 7" H x 16-3/16" D (483 mm x 178 mm x 448 mm)	
NA	Rack Mount Keyboard Tray (included with computer)	19" W x 1-3/4" H x 12-3/4" D (483 mm x 44 mm x 324 mm)	NA

LCD Monitors** (see below and page 2 for additional details)

Model	Description	Dimensions	Input AC Ratings
4190-7130*	19" Desktop	16.73" W x 16.3" H x 9.44" D (425 mm x 414 mm x 240 mm)	100-240 VAC, 50/60 Hz, 0.4 A @ 120 VAC (48 W)
4190-7230*	19" Rack Mount with Touchscreen	19.0" W x 15.7" H x 2.71" D (483 mm x 399 mm x 69 mm)	
4190-7114	42" Horizontal Wall Mount	41.3" W x 25.2" H x 5.0" D (1049 mm x 640 mm x 127 mm)	100-240 VAC, 50/60 Hz, 2.02 A @ 120 VAC (243 W)

* Computers and monitors are shipped with 120 VAC cord; NEMA 5-15P plug to IEC-320 C-13 connector. For use with other voltages, locally obtain a cord in compliance with local safety standards.

4190-7011 and 4190-7012 Computer Minimum Specifications Reference**

Enclosure	Passive backplane with: 7 PCI slots, 2 ISA slots, and 1 CPU slot; security features: key lock reset switch; fan monitor card; locked door protecting access to the CD/DVD R/W drives and two front mounted USB ports
Computer	Compatible with Microsoft Windows Vista, or Windows XP 32 bit operating system, 2.8 GHz CPU with 2 GB RAM (or Core 2 Duo 2.1 GHz CPU with 4 GB RAM), 40 GB minimum hard drive; 2 Serial ports, 1 Parallel port, 4 USB ports, dual Gigabit LAN, 1 PS/2 mouse port, 1 PS2 mouse & keyboard adapter cable; SVGA video output with 16 MB VRAM, CD/DVD R/W, 101 key keyboard, PS/2 mouse, PCI and ISA slots (as required)

**** PLEASE NOTE:** Simplex 4190 Series computers are Agency listed for use with PC Annunciator software. For applications where Agency listings are not required, PC Annunciator software should be compatible with most computers meeting the stated minimum specifications. However, due to computer manufacturers potentially using unique and/or proprietary drivers, hardware, or other software not tested with PC Annunciator software, there may be incompatibilities. If other computers are used, proper operation with PC Annunciator software may require technical adjustments by a qualified computer technician and would be the sole responsibility of the computer supplier and computer manufacturer.

Computer Port Reference

RS-232 Serial Ports	Two available; one is required to connect to Port B of the fire alarm control panel
USB Serial Ports	4 total; 2 in the rear (one is used for Server Security Dongle), and 2 in the front behind the locked door
Ethernet Ports	Two available; one is required for Ethernet connection to Remote Clients
Parallel Port	One available
Printable Information	Historical log reports, TrueAlarm Service Reports, and System Activity Reports
Printer Compatibility	Agency listed printer 4190-9013 is recommended (see data sheet S4190-0011); other serial or parallel port printers per operating system compatibility

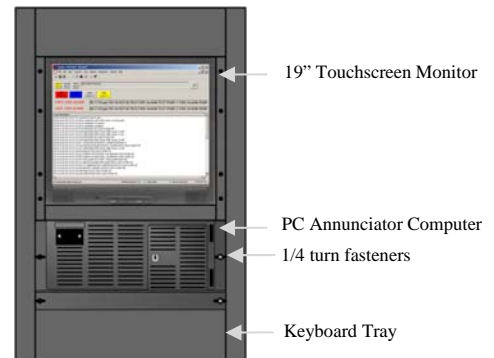
Environmental Specifications

Operating Temperature	32° to 120° F (0° to 49° C)
Operating Humidity	up to 93% RH, non-condensing, at 90° F (32° C)

Hardware Reference



Rackmount PC and Monitor



Tyco is a registered trademark of Tyco International Services GmbH and is used under license. Simplex, the Simplex logo, TrueAlarm, and WALKTEST are trademarks of Tyco International Ltd. and its affiliates and are used under license. Microsoft, Windows, and Vista are trademarks of Microsoft Corporation in the United States and/or other countries.

Simplex

SimplexGrinnell LP Westminster • Westminster, MA • 01441-0001 • USA

S4190-0013-22

www.simplexgrinnell.com

© 2011 Tyco. All rights reserved. All specifications and other information shown were current as of document revision date and are subject to change without notice.